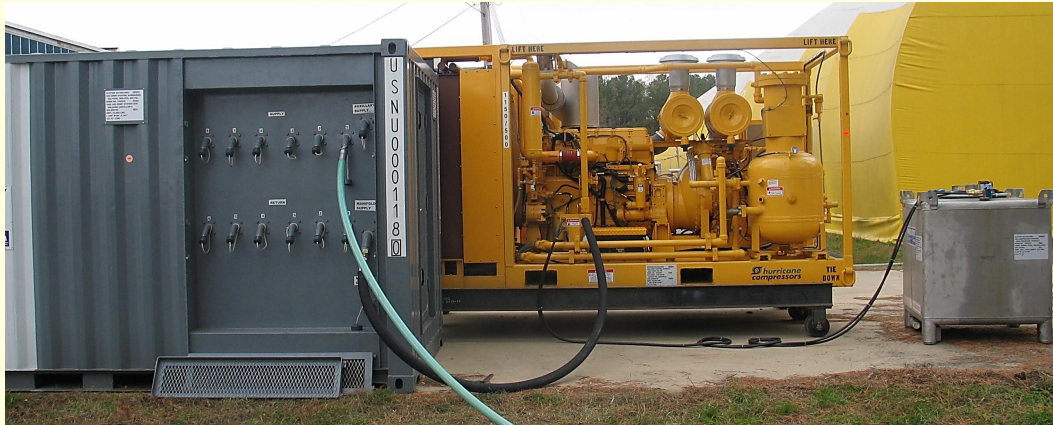


S0300-BV-CAT-020

AIR COMPRESSOR SYSTEM, SUB SALV, 1150-CFM, 500-PSI

System - DS0130



System DS0130

S0300-BV-CAT-020

AIR COMPRESSOR SYSTEM, SUB SALV, 1150-CFM, 500-PSI

System - DS0130

The Submarine Salvage Air Compressor System DS0130 is a portable unit used to provide high-pressure compressed air to dewater sunken vessels in up to 1000 feet of seawater. The system consists of an 1150-scfm air compressor with its spare parts kit and support van. A Hose Reel Van VA0246 and Fuel Tank TK0040 are included. The ancillary equipment consists of salvage air hoses, an air delivery manifold, air couplings, various fittings, gauges, tools, and a spare parts kit.

System Components for DS0130

Alternates

ESSM No	Nomenclature	Type	Qty	NS	Cont
AC0245	AIR COMPRESSOR, 1150 CFM @ 300/500 PSI (SUB SA	BL	1		Y
AC0246	SPARE PARTS KIT, FOR AC0245	Contents	1		
SL0401	ROUNDSLING BRIDLE, POLY, 4-LEG (2-13', 2-15')	Contents	1		
TK0040	TANK, DIESEL FUEL, 350-GALLON	BL	1		
VA0245	VAN, AIR COMPRESSOR SYSTEM, SUB SALV (ANC)	BL	1		Y
CU1982	QUICK RELEASE COUPLING ASSEMBLY	Contents	6		
RL0600	REEL, SUB SALV HOSE ASSY	Contents	9		
TL1983	WRENCH FOR SALVAGE DECK FITTING	Contents	2		
TL1985	SUBMARINE ROYLYN CAP REMOVAL TOOL	Contents	2		
VA0246	VAN, AIR COMPRESSOR SYS, SUB SALV (HOSE REELS)	BL	1		Y
RL0600	REEL, SUB SALV HOSE ASSY	Contents	12		

Baseline verified on 3/16/2017, * Not shown in catalog.

S0300-BV-CAT-020

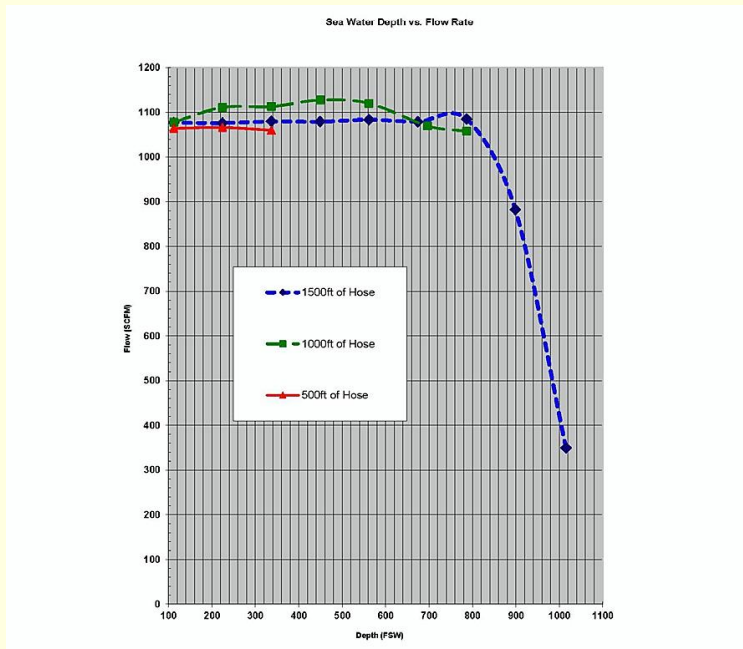
AIR COMPRESSOR SYSTEM, SUB SALV, 1150-CFM, 500-PSI

System - DS0130

ESSM - AC0245 AIR COMPRESSOR, 1150 CFM @ 300/500 PSI (SUB SALV)



Submarine Salvage Air Compressor AC0245



AC0245 Specifications

The Submarine Salvage Air Compressor AC0245 is a diesel driven, two-stage, oil-flooded, rotary screw air compressor capable of delivering up to 1150 scfm at 300 or 500 psi. The air compressor and engine assembly is skid-mounted and enclosed in a steel frame equipped with forklift slots and lifting rings to facilitate handling.

S0300-BV-CAT-020

AIR COMPRESSOR SYSTEM, SUB SALV, 1150-CFM, 500-PSI

System - DS0130

Specifications

Type	Description	Qty
Compressor Assembly		
Manufacturer	Hurricane Compressors	
Model	10081	
Compressor		
Manufacturer	Sullair	
Model	1150/300/500	
Type	Rotary screw	
Rated capacity	1150 scfm	
Operating pressure	300/500 psi	
Engine		
Manufacturer	Caterpillar	
Model	CAT 3456E	
Rated speed	1800 rpm	
Idle speed	1400 rpm	
Horsepower	607	
Starting system	24 V dc	
Fuel	Diesel	
Fuel source	External fuel tank	
Fuel consumption	12.5 gph	

Physical Characteristics

Type	Descriptions		
	Shipping	Operating	
Length	14 ft, 4 in	14 ft, 4 in	
Width	7 ft, 5 in	7 ft, 5 in	
Height	7 ft, 6 in	7 ft, 6 in	
Cube	798 cu ft	798 cu ft	
Footprint	107 sq ft	107 sq ft	
Weight	17925 lbs	17925 lbs	

References

Ref No	Reference
1	Caterpillar Operation and Maintenance Manual, 3406E and 3456 Industrial Engines, SEBU6959-02

S0300-BV-CAT-020

AIR COMPRESSOR SYSTEM, SUB SALV, 1150-CFM, 500-PSI

System - DS0130

References

Ref No	Reference
2	Caterpillar Parts Manual, 3456 Industrial Engine, SEBP2839-01
3	Hurricane Compressors, Rotary Screw Air Compressor, 1150 CFM/300/500 PSIG Submarine Salvage, Operation and Maintenance Manual, Model #10081

S0300-BV-CAT-020

AIR COMPRESSOR SYSTEM, SUB SALV, 1150-CFM, 500-PSI

System - DS0130

ESSM - AC0246 SPARE PARTS KIT, FOR AC0245



Spare Parts Kit AC0246

The Spare Parts Kit AC0246 contains the items necessary to support the operation and maintenance of one Submarine Salvage Air Compressor AC0245.

Specifications

Type	Description	Qty
Manufacturer	ESSM Facility	
Model	AC0246	
This kit contains the following items		
Container, spare parts	24" x 16" x 13"	1
Belt, alternator		1
Belt, water pump		1
Element, fuel-water separator		1
Element, high pressure filter, 2"		1
Element, Sullair moisture separator		1
Filter, fuel, primary		1
Filter, fuel, secondary		1
Filter, engine oil		1
Fuse, 10-amp		3

S0300-BV-CAT-020

AIR COMPRESSOR SYSTEM, SUB SALV, 1150-CFM, 500-PSI

System - DS0130

Specifications

Type	Description	Qty
Fuse, 15-amp		3
Light bulb, incandescent		10
Inventory, laminated		1

Physical Characteristics

Type	Descriptions		
	Shipping		
Length	2 ft, 0 in		
Width	1 ft, 4 in		
Height	1 ft, 1 in		
Cube	3 cu ft		
Footprint	3 sq ft		
Weight	30 lbs		

References

Ref No	Reference
1	None

S0300-BV-CAT-020

AIR COMPRESSOR SYSTEM, SUB SALV, 1150-CFM, 500-PSI

System - DS0130

ESSM - SL0401 ROUNDSLING BRIDLE, POLY, 4-LEG (2-13', 2-15')



Roundsling Bridle SL0401

The Polyester Roundsling Bridle SL0401 is designed specifically for handling the Submarine Salvage Air Compressor AC0245 in an under-the-hook configuration using a crane. The lifting assembly has unequal length legs to keep the compressor level during lifting. The bridle is equipped with four screw pin shackles and is shipped with the air compressor.

Specifications		
Type	Description	Qty
Sling		
Manufacturer	Flexilift	
Model	FC1550	
Vertical SWL	36,700 lb	
Leg length	2 legs, 13' long	
	2 legs, 15' long	
Central lifting ring	1 3/4" oblong	
Shackle		
Manufacture	Commercial	
Shackle type	Screw pin shackle	
Size	1 1/4"	

S0300-BV-CAT-020

AIR COMPRESSOR SYSTEM, SUB SALV, 1150-CFM, 500-PSI

System - DS0130

Specifications

Type	Description	Qty
Working load limit	18 tons	

Physical Characteristics

Type	Descriptions		
	Shipping		
Length	2 ft, 6 in		
Width	2 ft, 6 in		
Height	2 ft, 6 in		
Cube	16 cu ft		
Footprint	7 sq ft		
Weight	90 lbs		

References

Ref No	Reference
1	Lift-All catalog 2014
2	Crosby General Catalog 2013

S0300-BV-CAT-020

AIR COMPRESSOR SYSTEM, SUB SALV, 1150-CFM, 500-PSI

System - DS0130

ESSM - TK0040 TANK, DIESEL FUEL, 350-GALLON, TRANSPORTABLE



350-Gallon Diesel Fuel Tank TK0040

The 350-Gallon Diesel Fuel Tank TK0040 is a portable, stainless steel container used to provide No. 2 diesel fuel to high flow components such as air compressors and firefighting systems. The tank is equipped with four lifting pad eyes at the top and forklift slots at the base to facilitate handling. A tank opening with a cap is provided for filling and for attachment of a fuel pickup and return assembly. A ball valve, located on the bottom of the tank, is used to drain fuel from the tank.

Specifications

Type	Description	Qty
Manufacturer	Hoover Materials Handling Group	
Design pressure	9.5 psi	
Material	Stainless steel	
Capacity	350 gallons	

Physical Characteristics

Type	Descriptions		
	Shipping (empty)	Operating full)	
Length	4 ft, 2 in	4 ft, 2 in	
Width	3 ft, 8 in	3 ft, 8 in	
Height	4 ft, 5 in	4 ft, 5 in	
Cube	68 cu ft	68 cu ft	

S0300-BV-CAT-020

AIR COMPRESSOR SYSTEM, SUB SALV, 1150-CFM, 500-PSI

System - DS0130

Physical Characteristics

Type	Descriptions		
Footprint	16 sq ft	16 sq ft	
Weight	473 lb	2400 lb	

References

Ref No	Reference
1	None

S0300-BV-CAT-020

AIR COMPRESSOR SYSTEM, SUB SALV, 1150-CFM, 500-PSI

System - DS0130

ESSM - VA0245 VAN, AIR COMPRESSOR SYSTEM, SUB SALV (ANC)



Submarine Salvage Air Compressor System Van VA0245



High Pressure Submarine Salvage Air Manifold

S0300-BV-CAT-020

AIR COMPRESSOR SYSTEM, SUB SALV, 1150-CFM, 500-PSI

System - DS0130

The Air Compressor System Van VA0245 is used for storing and shipping the ancillary equipment for the Air Compressor System S01300 when the 1150-Cfm Air Compressor (AC0245) is the designated air compressor. The van contains a high-pressure air manifold to control the supply and return air to the vessel being salvaged and the tools required to maintain and operate the Air Compressor System.

Specifications

Type	Description	Qty
Manufacturer	ESSM Facility	
Model	VA0245	
This van contains the following items:		
Reel, Submarine Salvage Hose Assembly	RL0600	9
Hose, 1 1/2" x 100', 500-psi, Synflex	HS1984	3
Hose, 1 1/2" x 200', 500-psi, Synflex	HS1985	1
Quick Release Coupling Assembly	CU1982	2
Tool, Cap Removal, Submarine Salvage	TL1983	2
Wrench for Salvage Deck Fitting	TL1985	2
Roundslings, Polyester, 16'		4
Block, contacts (KA1, KA2, and KA3)		1
Element, coolant cartridge		1
Element, Sullair moisture separator		1
Element, primary and safety air cleaner		2
Relay, manual reset		1
Repair kit	back pressure regulator and blowdown valve	1
Repair kit,	solenoid valve	1
Repair kit	separator element	1
Repair kit	shaft seal	1
Repair kit	thermostatic valve	1
Switch, time delay		1
Inventory, laminated		1

Physical Characteristics

Type	Descriptions		
	Shipping	Shipping (S/N 9010795)	
Length	20 ft, 0 in	20 ft, 0 in	
Width	8 ft, 0 in	8 ft, 0 in	

S0300-BV-CAT-020

AIR COMPRESSOR SYSTEM, SUB SALV, 1150-CFM, 500-PSI

System - DS0130

Physical Characteristics

Type	Descriptions		
Height	8 ft, 0 in	8 ft, 6 in	
Cube	1360 cu ft	1280 cu ft	
Footprint	160 sq ft	160 sq ft	
Weight	13325 lb	11,620 lb	

References

Ref No	Reference
1	None

S0300-BV-CAT-020

AIR COMPRESSOR SYSTEM, SUB SALV, 1150-CFM, 500-PSI

System - DS0130

ESSM - CU1982 QUICK RELEASE COUPLING ASSEMBLY



Quick Release Coupling CU1982

The Quick Release Coupling CU1982 is used to connect one end of a salvage air hose to a submarine salvage air fitting.

Specifications

Type	Description	Qty
Manufacturer	Roylyn	
Model	7714	
Hose size	1 1/2"	
Hose fitting size	1 1/4"	
Connection	National Pipe (NP) mechanical seal	

Physical Characteristics

Type	Descriptions		
	Shipping		
Length	0 ft, 6 in		
Width	0 ft, 7 in (includes two e		
Height	0 ft, 3 in		
Cube	1 cu ft		

S0300-BV-CAT-020

AIR COMPRESSOR SYSTEM, SUB SALV, 1150-CFM, 500-PSI

System - DS0130

Physical Characteristics

Type	Descriptions		
Footprint	1 sq ft		
Weight	4 lb		

References

Ref No	Reference
1	None

S0300-BV-CAT-020

AIR COMPRESSOR SYSTEM, SUB SALV, 1150-CFM, 500-PSI

System - DS0130

ESSM - RL0600 REEL, SUB SALV HOSE ASSY



Submarine Salvage Hose Assembly Reel RL0600

The Hose Assembly Reel RL0600 contains 1 1/2-inch Synflex salvage air hose assemblies. Each hose reel is configured to hold one 200-foot and three 100-foot air hoses with end and swivel fittings. Hose reel assemblies are stored in the Air Compressor System Ancillary Vans VA0245 (9 reels), and the Hose Reel Van VA0246 (12 reels).

Specifications		
Type	Description	Qty
Manufacturer	ESSM facility	
Model	RL0600	
Reel, Submarine Salvage Hose Assembly	RL0600	1
Hose, 1 1/2" x 200', 500 psi	Synflex, Submarine Salvage	1
Hose, 1 1/2" x 100', 500 psi	Synflex, Submarine Salvage	3
Fitting, 1 1/2" Swivel, Dixon		1

Physical Characteristics		
Type	Descriptions	
	Shipping	
Length	4 ft, 8 in	

S0300-BV-CAT-020

AIR COMPRESSOR SYSTEM, SUB SALV, 1150-CFM, 500-PSI

System - DS0130

Physical Characteristics

Type	Descriptions		
Width	2 ft, 4 in		
Height	4 ft, 8 in		
Cube	51 cu ft		
Weight	515 lb		

References

Ref No	Reference
1	None

S0300-BV-CAT-020

AIR COMPRESSOR SYSTEM, SUB SALV, 1150-CFM, 500-PSI

System - DS0130

ESSM - TL1983 WRENCH FOR SALVAGE DECK FITTING



Salvage Deck Fitting Wrench TL1983

The Salvage Deck Fitting Wrench TL1985 is used to provide access to the submarine hull-mounted salvage air fitting during connection of the salvage air hose. It is designed as a combination tool to allow the diver to remove the salvage air connection cap, connect the salvage air hose, and operate the salvage air hull inlet valve. Two salvage deck-fitting wrenches are stored in each of the Submarine Salvage Support Vans (VA0245 and VA0246).

Specifications

Type	Description	Qty
Manufacturer	Roylyn	
Model	0160-0003	

Physical Characteristics

Type	Descriptions		
	Shipping		
Length	2 ft, 4 in		
Width	1 ft, 0 in		
Height	0 ft, 4 in		
Cube	1 cu ft		
Weight (lb)	7 lb		
Footprint	3 sq ft		

S0300-BV-CAT-020

AIR COMPRESSOR SYSTEM, SUB SALV, 1150-CFM, 500-PSI

System - DS0130

References

Ref No	Reference
1	U.S. Navy Ship Salvage Manual, Volume II, Submarine Salvage, NAVSHIPS 0994-000-3020

S0300-BV-CAT-020

AIR COMPRESSOR SYSTEM, SUB SALV, 1150-CFM, 500-PSI

System - DS0130

ESSM - TL1985 SUBMARINE ROYLYN CAP REMOVAL TOOL



Submarine Roylyn Cap Removal Tool TL1985

The Roylyn Cap Removal Tool TL1985 is used to operate the submarine hull-mounted salvage air fitting valves to allow supply of high pressure air to the high and low salvage deck connections during submarine salvage operations. Two cap removal tools are stored in each of the Submarine Salvage Support Vans (VA0245 and VA0246).

Specifications

Type	Description	Qty
Manufacturer	Essm Facility	
Part Number	TL1985	

Physical Characteristics

Type	Descriptions		
	Shipping		
Length	0 ft, 7 in		
Width	0 ft, 8 in (includes two e		
Height	0 ft, 3 in		
Cube	1 cu ft		
Footprint	1 sq ft		
Weight (lb)	5 lb		

S0300-BV-CAT-020

AIR COMPRESSOR SYSTEM, SUB SALV, 1150-CFM, 500-PSI

System - DS0130

References

Ref No	Reference
1	U.S. Navy Ship Salvage Manual, Volume II, Submarine Salvage, NAVSHIPS 0994-000-3020

S0300-BV-CAT-020

AIR COMPRESSOR SYSTEM, SUB SALV, 1150-CFM, 500-PSI

System - DS0130

ESSM - VA0246

VAN, AIR COMPRESSOR SYS, SUB SALV (HOSE REELS)

The Submarine Salvage Air Compressor System Van VA0246 is used for storing and shipping the salvage air hoses on storage reels required for use with the salvage air compressors.

Specifications

Type	Description	Qty
Manufacturer	ESSM Facility	
Model	VA0246	
This van contains the following items:		
Reel, Sub Salv Hose Assembly	RL0600	12
Hose, 1 1/2" x 100', 500-psi, Synflex	HS1984	3
Hose, 1 1/2" x 200', 500-psi, Synflex	HS1985	1
Roundslings, Polyester, 16'		4

Physical Characteristics

Type	Descriptions		
	Shipping	Shipping (S/N 7175517)	
Length	20 ft, 0 in	20 ft, 0 in	
Width	8 ft, 0 in	8 ft, 0 in	
Height	8 ft, 0 in	8 ft, 6 in	
Cube	1360 cu ft	1280 cu ft	
Footprint	160 sq ft	160 sq ft	
Weight	11,560 lb	11,560 lb	

References

Ref No	Reference
1	None

S0300-BV-CAT-020

AIR COMPRESSOR SYSTEM, SUB SALV, 1150-CFM, 500-PSI

System - DS0130

ESSM - RL0600 REEL, SUB SALV HOSE ASSY



Submarine Salvage Hose Assembly Reel RL0600

The Hose Assembly Reel RL0600 contains 1 1/2-inch Synflex salvage air hose assemblies. Each hose reel is configured to hold one 200-foot and three 100-foot air hoses with end and swivel fittings. Hose reel assemblies are stored in the Air Compressor System Ancillary Vans VA0245 (9 reels), and the Hose Reel Van VA0246 (12 reels).

Specifications		
Type	Description	Qty
Manufacturer	ESSM facility	
Model	RL0600	
Reel, Submarine Salvage Hose Assembly	RL0600	1
Hose, 1 1/2" x 200', 500 psi	Synflex, Submarine Salvage	1
Hose, 1 1/2" x 100', 500 psi	Synflex, Submarine Salvage	3
Fitting, 1 1/2" Swivel, Dixon		1

Physical Characteristics		
Type	Descriptions	
	Shipping	
Length	4 ft, 8 in	

S0300-BV-CAT-020

AIR COMPRESSOR SYSTEM, SUB SALV, 1150-CFM, 500-PSI

System - DS0130

Physical Characteristics

Type	Descriptions		
Width	2 ft, 4 in		
Height	4 ft, 8 in		
Cube	51 cu ft		
Weight	515 lb		

References

Ref No	Reference
1	None